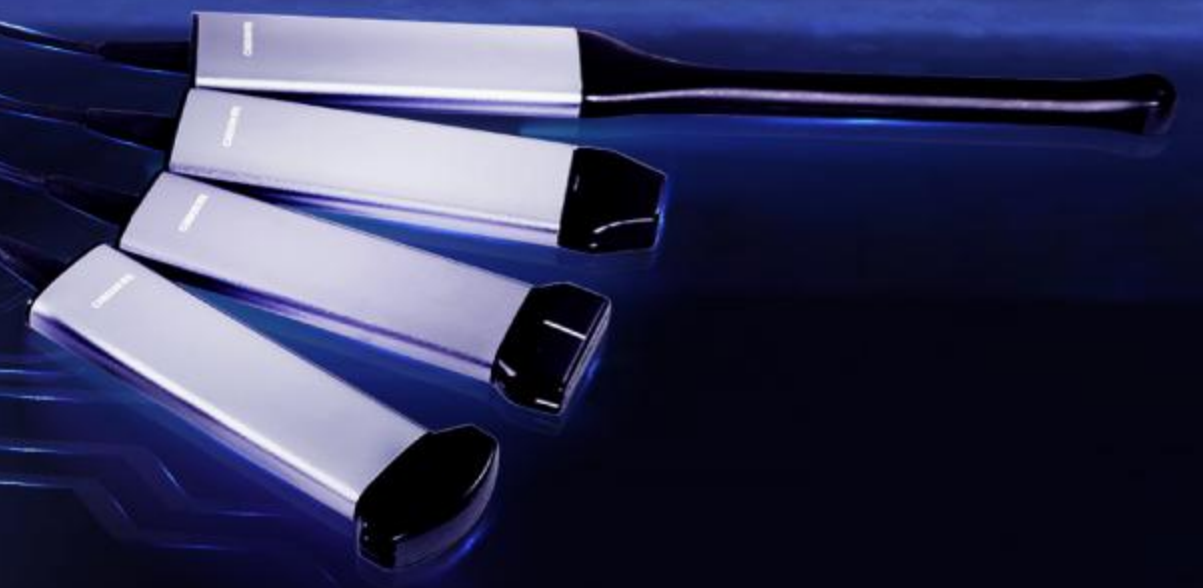


**CHISON**  
Value Beyond Imaging



# SonoAir<sup>TM</sup> 70

Redefine the Future of Portable Ultrasound



# SonoAir<sup>TM</sup> 70

SonoAir 70, Redefining the future of portable ultrasound. CHISON's constant efforts in contributing the ease and effortless healthcare to the world.

Combination of structural expertise, algorithms, and probes ensures maximum efficiency and fatigueless practice. Ergonomically designed SonoAir 70, delivers the world class experience in Human-Machine interaction.



## Ultra -Fast

- Boot up in 25s.
- Can be shut down in 3s.
- Awake the system in 3s.

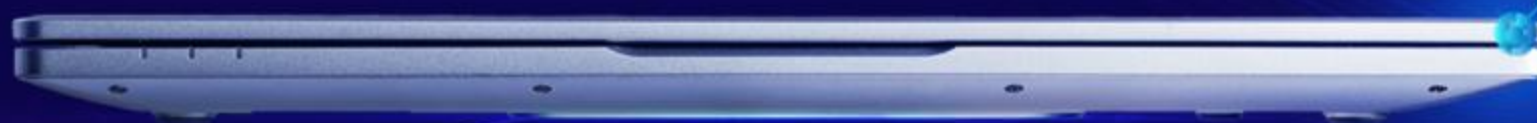


## Ultra -Portable

- World's thinnest and lightest portable ultrasound system weighing 2.1kg, boasts a width of 26mm.
- Robust aluminium body increases the durability.

2.1kg

26mm



## Ultra-Green

- CHISON holds it's position clear "Save Power, Save Environment".
- Scanning for 180mins+ in a single charge.
- 36h+ on stand-by mode guarantees a more reliable diagnosis.



36h+

standby

180 mins+

scanning



## 3D Ultra - Approachable

- Innovative and interactive 3D UI/UX
- Increased efficiency and diagnostic confidence.



## Ultra - Connectable

- Live 4 probe ports bring a quick shift in portable system.
- Designed to cater all applications & bring complete solutions for your imaging.



## Ultra - Touchable

- 14.1" of touchscreen with highly sensitive gesture control makes ultrasound imaging a new experience and reduces key strokes.
- Built-in trackpad promises comfort and ease of use.
- Unique finger print lock delivers the promised data protection and safety.



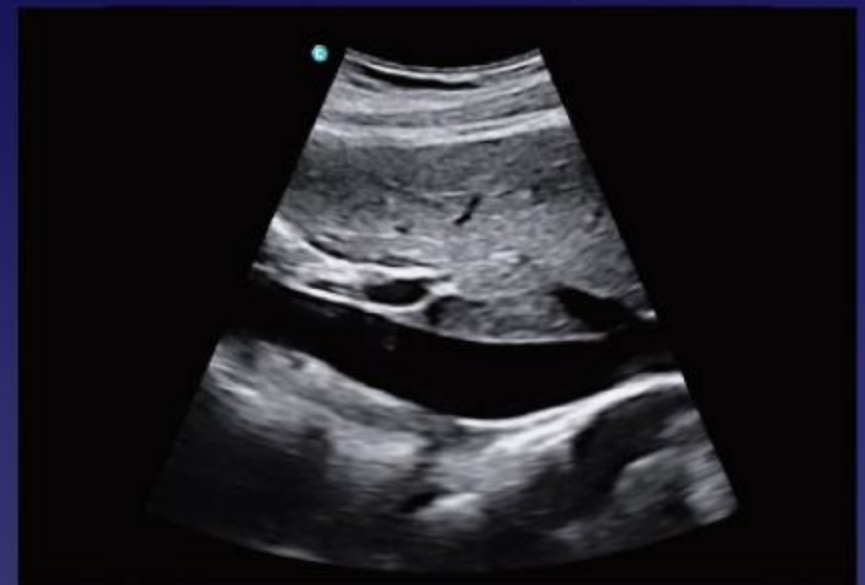
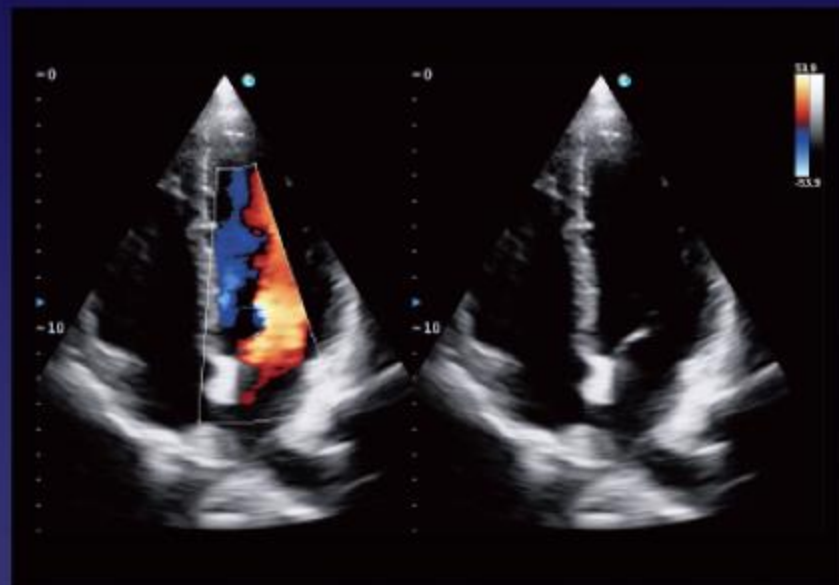
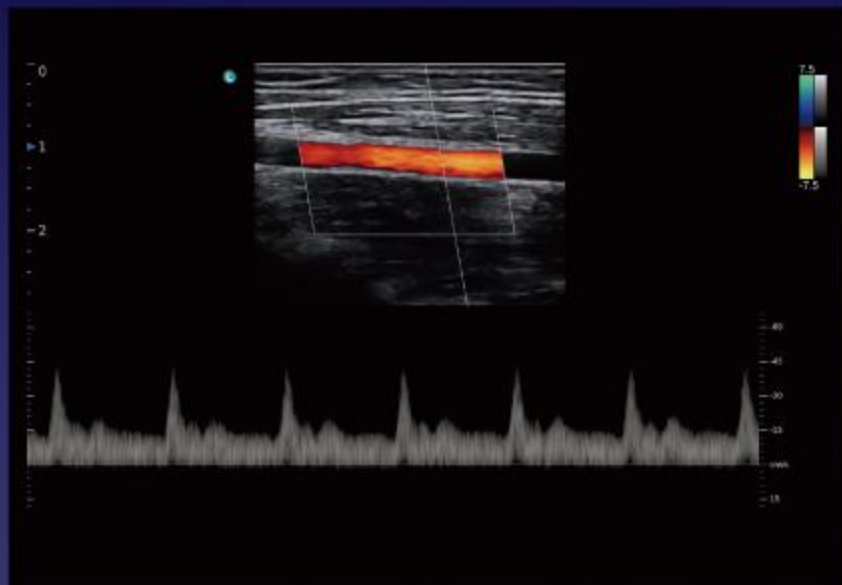
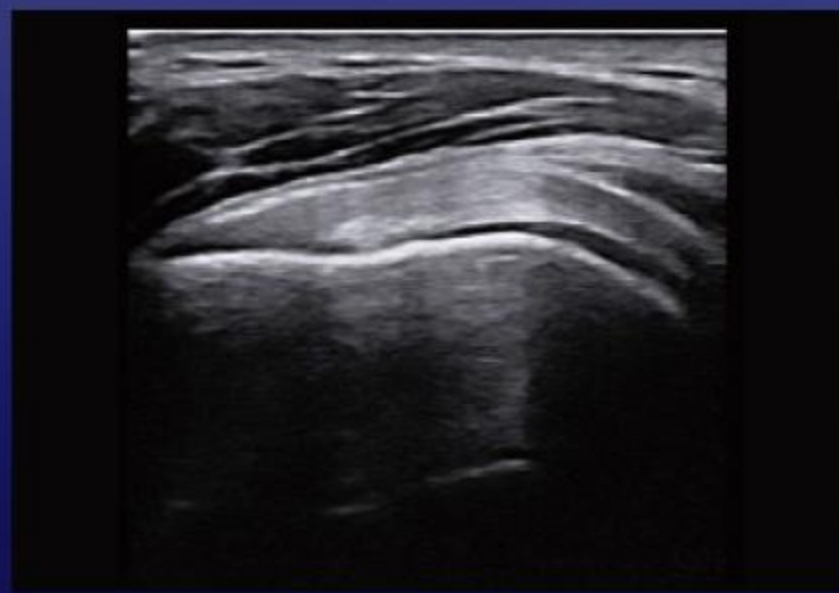
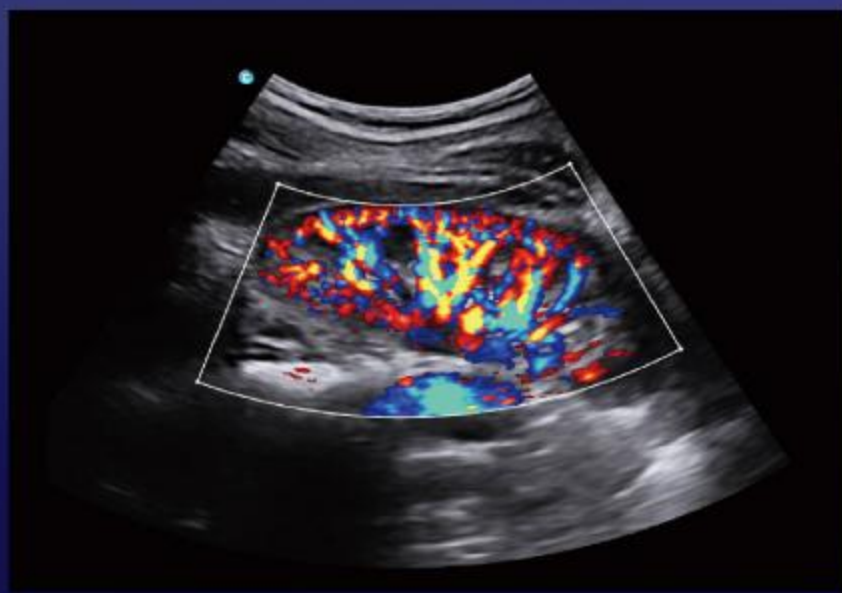


## Ultra - Flexible

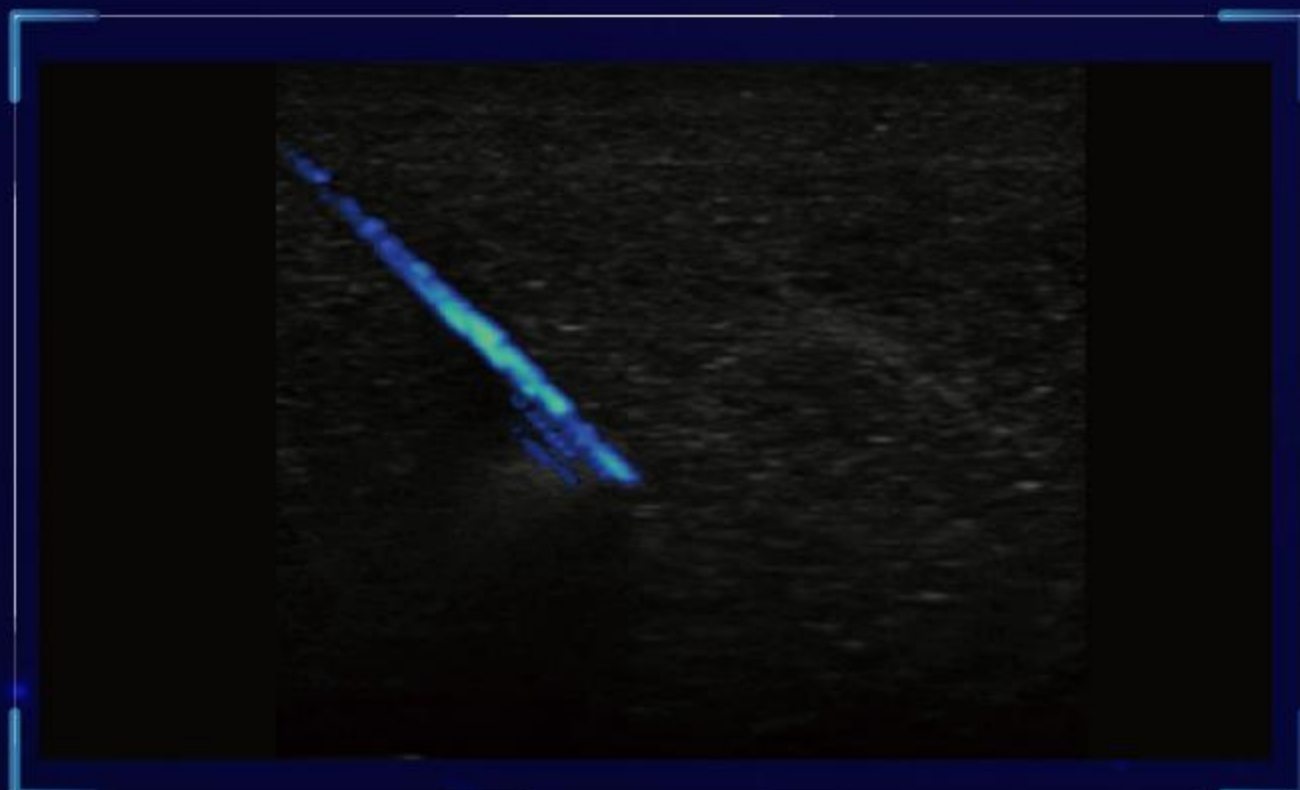
- Dedicated trolley with height adjustable.
- Featuring 4 transducer connectors, SonoAir can seamlessly transition into a cart-based ultrasound system.



**Bag**



# OUTSTANDING FEATURES



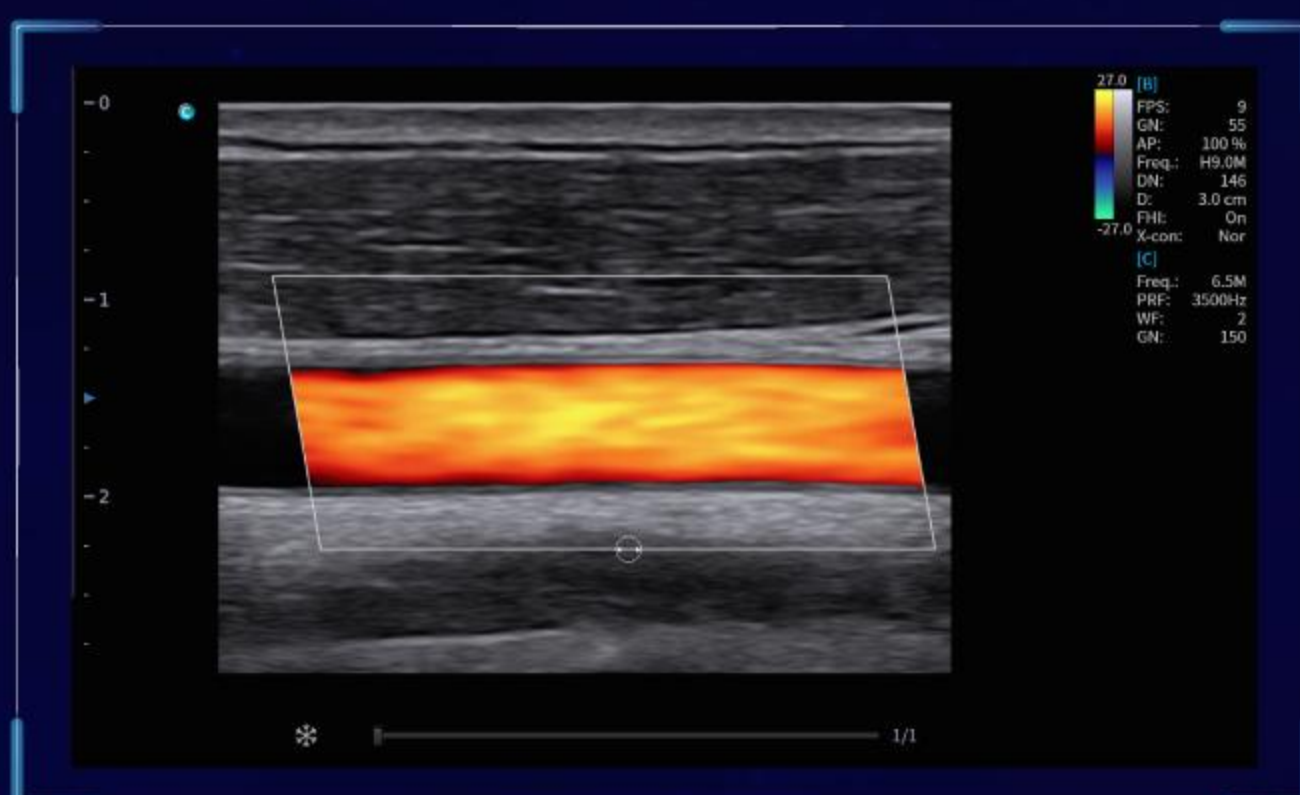
## SonoNeedle

In-Plane Biopsy, Out-plane biopsy Safe, Reliable and efficient tool to increase clinical confidence in ultrasound guided procedure.



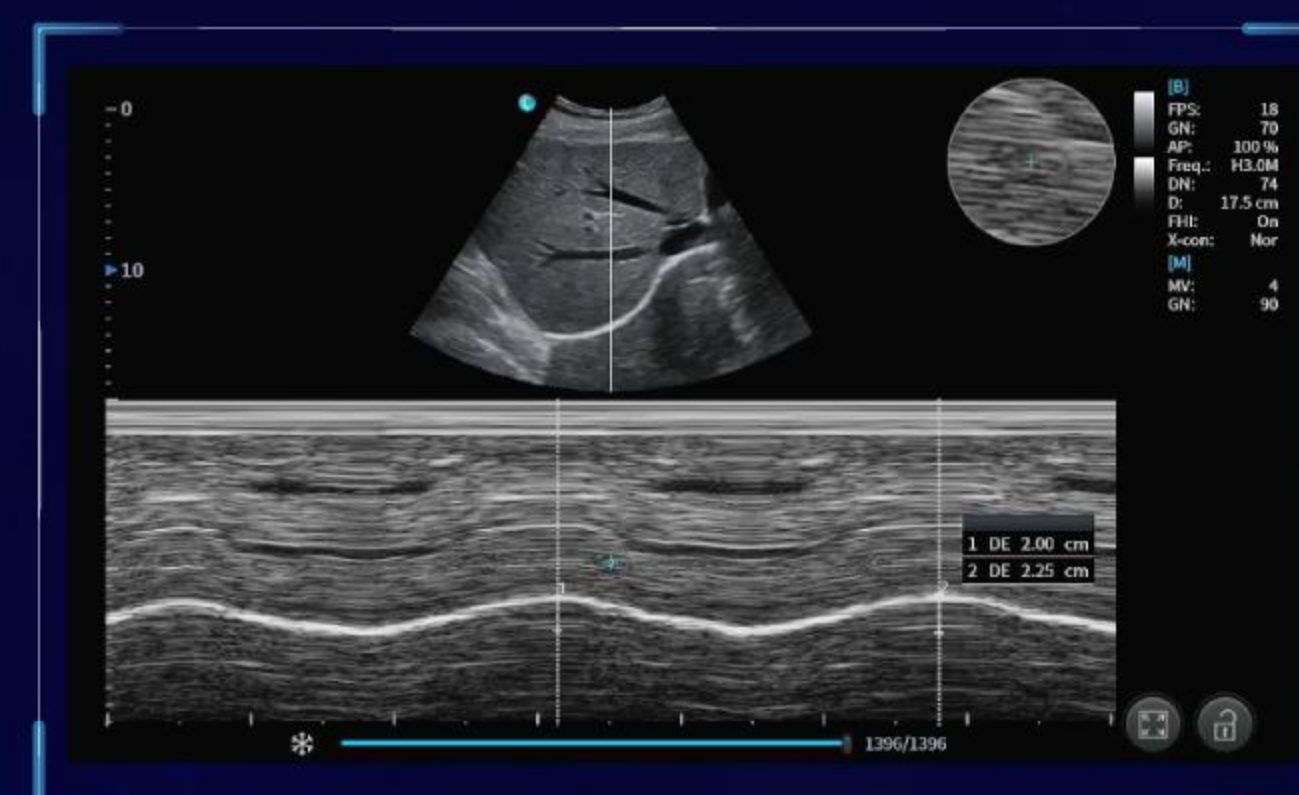
## SonoBladder

Automatically measure bladder volume. Based on Artificial Intelligence. Enhanced efficiency and precision.



## Intelligent Doppler

Automatically measure bladder volume. Based on Artificial Intelligence. Enhanced efficiency and precision.



## SonoDiaph

Automatically measure the movement of diaphragm.

# WIDE APPLICATIONS



 General Practice



 Physical Therapy



 Anesthesiology



 Critical Care



 Vascular Access



 Other POC



# SonoAir



**7L**

Linear  
7.5MHz

**3C**

Convex  
3.0MHz

**6MC**

Micro-convex  
6.0MHz

**3S**

Phased Array  
2.5MHz

**6E**

Endocavity  
6.0MHz

## CHISON Medical Technologies Co., Ltd.

**Sales & Service Contact Address:** No.3 Changjiang South Road, Xinwu District, Wuxi, 214028 Jiangsu, P.R. China.

TEL : 0086-510-85310937 FAX : 0086-510-85310726 EMAIL : export@chison.com.cn

We reserve the right to make changes to this catalogue without prior notice. All rights reserved. Please contact our local dealer for the latest information.



CHISON FaceBook  
Follow CHISON's Social Media  
for the Latest Updates!